



RAAF Amberley Airspace Safety

Brisbane Valley Airshow – Saturday & Sunday 27th & 28th August 2016
ATC Flight Planning Guidance – *if Little AMB Airspace is Active*

Unit Aviation Safety Officer (UASO):
FLTLT Chris Loadsman (07) 536 13542 or 13349
General Aviation Liaison Officer (GALO):
FLTLT Andy McWatters (07) 536 13542 or 13349

1. Flight Planning: Pilots intending to transit AMB airspace or fly in close proximity to its boundaries, ie YHEC-YWSG need to ensure they conduct thorough flight planning prior to departing for Watts Bridge (YWSG), including Airspace NOTAMs, Facilities NOTAMs and weather IAW AIP ENR 1.10 AMB ATC strongly encourages pilots to submit a flight plan via NAIPS. Pilots who do not submit a flight plan will likely be instructed to remain outside controlled airspace (OCTA).

2. Airspace NOTAMs: AMB Airspace NOTAMs can be found using airspace group code 'AMX'. They will NOT appear in the 'YAMB' NOTAMs. Pilots should study the AMX NOTAMs prior to departing and ensure they understand what portions of Restricted Airspace are active, what levels and at what times.

3. Airborne: If you intend to avoid Restricted Airspace, you must do so adequately. We suggest a 2-3nm buffer, use geographical features to navigate well clear of the airspace. **DO NOT** fly along the edge of the line, this will likely result in AMB ATC calling you for your intentions and is a distraction to the controllers' primary duties, as they will monitor your track very closely.

If you plan to fly through the Restricted Airspace, give yourself plenty of time to receive a clearance from AMB ACD Frequency 134.6 We suggest calling at least 10nm prior to the boundary. If you are unsure if AMB is active, ask BN CEN on 121.2, 125.7 or 129.0 (avail 24/7)

If AMB Restricted Airspace is NOT active, CTAF procedures apply frequency 118.3 within the CTR, ensure you broadcast your intentions, if you intend to transit this area.

For all other tracks into YWSG

Little Amberley Airspace, as described in ERSA FAC A-4, consists of:

CTR SFC-A085

R625A A015-A085

R625B A025-A085

Danger Areas D612A and D612B lie beneath, respectively, the **Danger Areas** are Class G airspace.

If you plan to come into AMB Restricted Airspace, call ACD 134.6 for an airways clearance at least 10nm prior to the boundary.

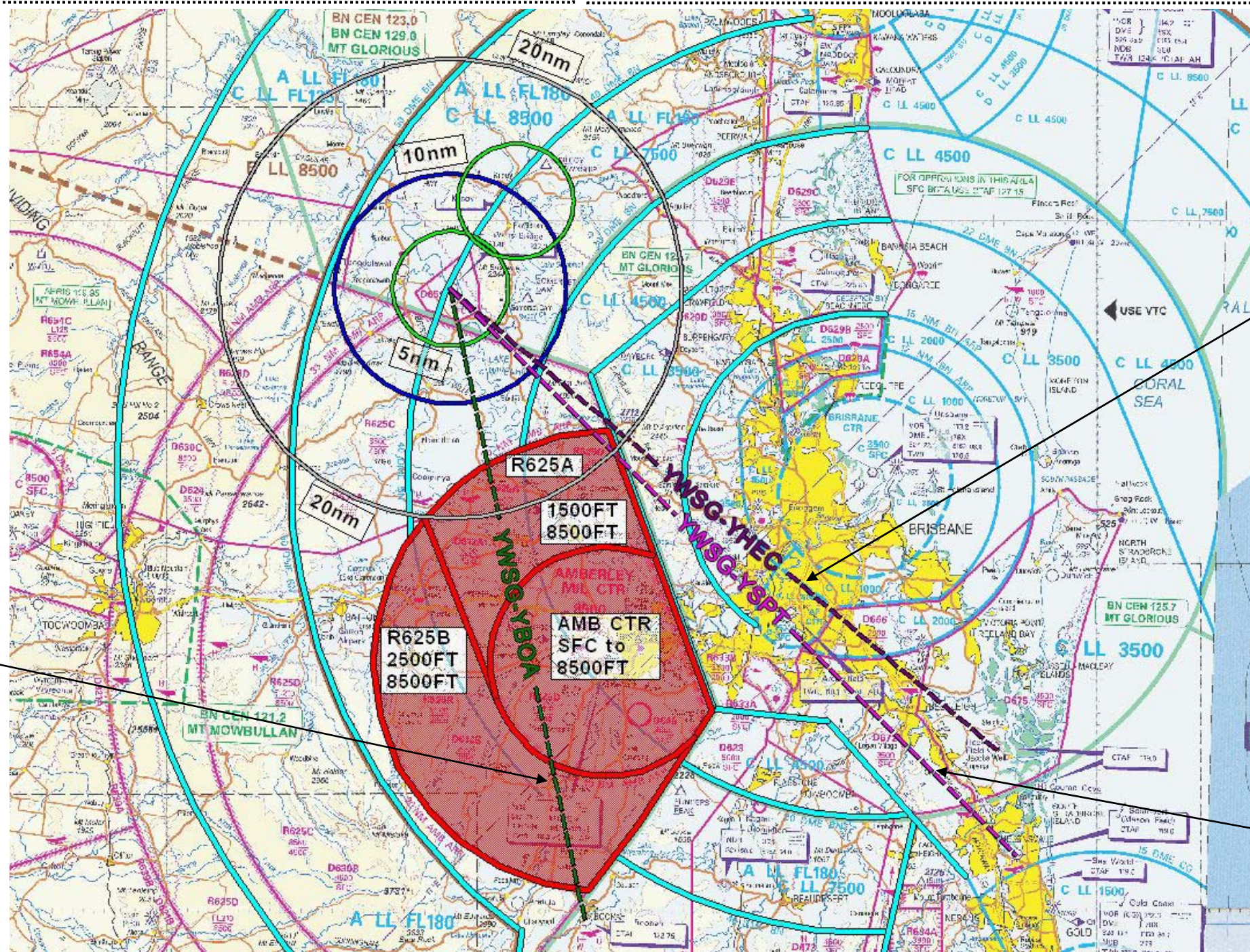
YBOA-YWSG

CAUTION: On the direct track you will enter the CTR and R625A above A015 and R625B above A025.

To avoid AMB Restricted Airspace, suggested tracking:

YBOA - MTWK - LKON - YWSG not above A025.

If you plan to come into AMB Restricted Airspace, call ACD 134.6 for an airways clearance as soon as practicable once airborne at YBOA.



YHEC-YWSG

CAUTION: On the direct track you will come very close to the NE corner of R625A A015-A085.

To avoid AMB Restricted Airspace, suggested tracking:

YHEC - PKR - GON (avoiding R633A and YBAF Class D) – **DBO - YWSG** at A025.

Caution the BN CTA steps departing YHEC.

If you plan to come into AMB Restricted Airspace, call ACD 134.6 for an airways clearance abeam GON. **Caution R633A.**

YSPT-YWSG

CAUTION: On the direct track you will enter R625A between LMC and NE Corner if above A015.

To avoid AMB Restricted Airspace, suggested tracking:

YSPT - PKR - GON (avoiding R633A and YBAF Class D) – **DBO - YWSG** at A025.

Caution the BN CTA steps departing YSPT.

If you plan to come into AMB Restricted Airspace, call ACD 134.6 for an airways clearance abeam GON.

452SQN AMB FLT - ATC



RAAF Amberley Airspace Safety

Brisbane Valley Airshow – Saturday & Sunday 27th & 28th August 2016

ATC Flight Planning Guidance – continued

Unit Aviation Safety Officer (UASO):

FLTLT Chris Loadsman (07) 536 13542 or 13349

General Aviation Liaison Officer (GALO):

FLTLT Andy McWatters (07) 536 13542 or 13349

4. Return Flight Planning: Again, pilots are strongly encouraged to submit a flight plan via NAIPS. As the airspace boundary is reasonably close to YWSG, pilots should call AMB ACD for clearance as soon as practicable after departing YWSG and clearing the CTAF area.

FLTLT Andy McWatters will be on the ground at YWSG with an 'ATC Safety' display tent, any questions on the days can be directed through him. Andy will have direct access to AMB ATC for coordination if required.

AMB ATC Contact Numbers/e-mail:

TWR – 07 5361 3346 TWR - 118.3 e-mail: andrew.mcwatters@defence.gov.au

APR – 07 5361 3349 ACD - 134.6 or 452sqnamb.appspr@defence.gov.au

GALO/UASO – 07 5361 3542



Airspace Hazards

The areas underneath AMB's Restricted Airspace are very busy with GA and RAAus aircraft. There are numerous ALAs and small airfields. Pilots need to keep a sharp lookout. Radio Controlled Model Aircraft and Commercial UAV operations exist in various locations beneath AMB's Restricted areas.

CAUTION: Frequent parachuting activities occur at Toogoolawah (YTLH) from FL150 and below. YTLH is 280 deg 4.4nm from YWSG.

Weather

Pilots should exercise caution when transiting over the range dividing the Wivenhoe Dam area and the Brisbane suburbs, especially in the area of Mr Glorious (2712FT).

Turbulence may be encountered, with updrafts causing discomfort to pilots/passengers and aircraft to gain altitude unexpectedly.

AIP Australia

18 AUG 2016

FAC YWSG - 1

WATTS BRIDGE



QLD S 27 05.9 E 152 27.6
AD OPR Watts Bridge Memorial Airfield Association, PO Box 98, Toogoolawah, QLD, 4313. EMAIL info@wattsbridge.com.au. PH 0427 699 239. Web Site www.wattsbridge.com.au.

REMARKS

- 1. PPR.
- 2. Commercial training operations, charges and/or conditions apply. Operators contact info@wattsbridge.com.au.

HANDLING SERVICES AND FACILITIES

AVGAS available - self serve swipe card - Mastercard and Visa card only.

ATS COMMUNICATIONS FACILITIES

FIA BRISBANE CENTRE 129.0 Circuit Area

CTAF 127.3

NOISE ABATEMENT PROCEDURES

- 1. Pilots are to operate aircraft with minimum audible and visual impact on the community.
- 2. Circuits or airwork not permitted before 0700 Local (except for departure and arrival).
- 3. Standard, recommended non towered joining procedures and circuit altitudes are required.

ADDITIONAL INFORMATION

- 1. The undershoot area to RWY 12 is being reclaimed and appears serviceable from the air. Gliders may use this area for winch launching. Touchdown should not be made until the Piano Keys ABM the primary windsock. White cross warning markers are displayed on the unserviceable area.
- 2. Low level aerobatic flying takes place to 5,000FT in the designated aerobatic box located SE of the airfield. Refer Watts Bridge Fly Neighbourly Map (point 6).
- 3. Non radio equipped ultralight, gyrocopters and gliders may be operating from the airfield.
- 4. Displaced threshold exists on both RWY 21 and RWY 12.
- 5. Avoid low level flight over farmhouses.
- 6. Consult www.wattsbridge.com.au for fly neighbourly requirements.
- 7. Intensive skydiving at Toogoolawah, 5NM NW of Watts Bridge.
- 8. Drainage ditches flank each TWY. Taxi on mown SFC and exit TWY to parking areas by marked access points only.
- 9. D651 (SFC to 3,000FT) centred on Watts Bridge Airfield for Unmanned Aerial Vehicle (UAV) testing.

CHARTS RELATED TO THE AERODROME

WAC 3340.

Pilots seeking more information about the Airshow should contact the Event Organisers, via

<http://brisbanevalleyairshow.com.au/>

FLY SAFE

452SQN AMB FLT - ATC